

INSPIROY FREGO

L310 / L610

Quick Start Guide

Guide de démarrage rapide

Schnellstartanleitung

クイックスタートガイド

빠른 시작 안내서

Guida rapida

Guía de inicio rápido

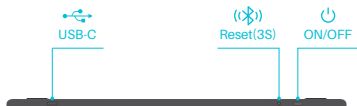
Guia de inicio rápido

Краткое руководство пользователя

Przewodnik szybkiego startu

Panduan Singkat





1

Wired Connection

Connexion filaire

Kabelgebundene Verbindung

有線接續

유선 연결

Connessione cablata

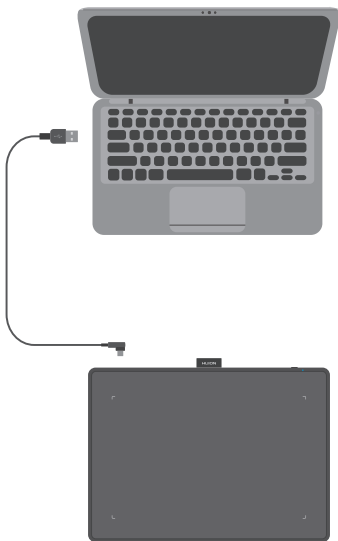
Conexión Por Cable

Conexão por Fio

Проводное соединение

Połączenie Kablowe

Koneksi dengan Kabel



2

Bluetooth Connection

Connexion Bluetooth

Bluetooth Verbindung

ブルートゥース接続

블루투스 연결

Connessione Bluetooth

Conexión Bluetooth

Conexão Bluetooth

Подключение Bluetooth

Połączenie Bluetooth

Konekksi Bluetooth



Install Driver

Installation du Pilote

Installieren des Treibers

ドライバのインストール

드라이버 설치

Installazione dei Driver

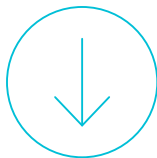
Instalar el Driver

Instalação do Driver

Установка драйвера

Instalacja sterownika

Cara instalasi driver



User Manual

Manuel de l'Utilisateur

Benutzerhandbuch

ユーザーマニュアル

사용자 매뉴얼

Manuale d'uso

Manual de usuario

Instrukcja obsługi

Руководство пользователя

Instrukcja obsługi

Panduan pengguna



4

Replace the Pen Nib

Remplacer la Pointe du Stylet

Wechseln der Stiftspitze

ペン先の交換

펜촉 교체

Sostituzione del pennino

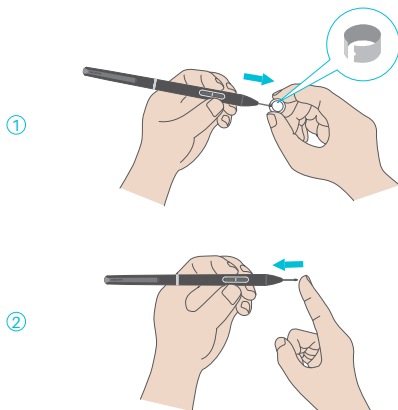
Recambie la Punta del Bolígrafo

Substituir a Ponta da Caneta

Замена наконечника пера

Wymiana końcówki pióra

Cara Mengganti Mata Pen (Nib)



FCC Warning

This device complies with part 15 of the FCC Rules. Operation is subject to the following two conditions: (1) This device may not cause harmful interference, and (2) this device must accept any interference received, including interference that may cause undesired operation.

Any Changes or modifications not expressly approved by the party responsible for compliance could void the user's authority to operate the equipment.

Note: This equipment has been tested and found to comply with the limits for a Class B digital device, pursuant to part 15 of the FCC Rules. These limits are designed to provide reasonable protection against harmful interference in a residential installation. This equipment generates uses and can radiate radio frequency energy and, if not installed and used in accordance with the instructions, may cause harmful interference to radio communications. However, there is no guarantee that interference will not occur in a particular installation. If this equipment does cause harmful interference to radio or television reception, which can be determined by turning the equipment off and on, the user is encouraged to try to correct the interference by one or more of the following measures:

- ▶ -Reorient or relocate the receiving antenna.
- ▶ -Increase the separation between the equipment and receiver.
- ▶ -Connect the equipment into an outlet on a circuit different from that to which the receiver is connected.
- ▶ -Consult the dealer or an experienced radio/TV technician for help.

The device has been evaluated to meet general RF exposure requirement. The device can be used in portable exposure condition without restriction.

This device complies with part 15 of the FCC Rules. Operation is subject to the following two conditions:

- (1) This device may not cause harmful interference, and
- (2) this device must accept any interference received, including interference that may cause undesired operation.

IC Warning

This device complies with Industry Canada's licence-exempt RSSs.

Operation is subject to the following two conditions:

- (1) This device may not cause interference; and
- (2) This device must accept any interference, including interference that may cause undesired operation of the device.

The device has been evaluated to meet general RF exposure requirement.

The device can be used in portable exposure condition without restriction.

Cet appareil est conforme aux CNR exemptes de licence d'Industrie Canada. Son fonctionnement est soumis aux deux conditions suivantes:

- (1) Ce dispositif ne peut causer d'interférences; et
- (2) Ce dispositif doit accepter toute interférence, y compris les interférences qui peuvent causer un mauvais fonctionnement de l'appareil.

Le dispositif a été conçu pour répondre à la demande générale de radioexposition.

CE Maintenance

1.Risk of explosion if battery is replaced by an incorrect type.

Dispose of used batteries according to the instructions.

2.The product shall only be connected to a USB interface of version USB2.0.

3.EUT Operating temperature range: -10° C to 40° C .

4.The device complies with RF specifications when the device used at 0mm from your body.

Declaration of Conformity

Shenzhen Huion Trend Technology Co., Ltd. hereby declares that this Creative Pen Tablet is in compliance with the essential requirements and other relevant provisions of Directive 2014/53/EU.In accordance with Article 10(2) and Article 10(10), This product is allowed to be used in all EU member states.



HUION YOUTUBE



HUION FACEBOOK



HUION WEBSITE

Shenzhen Huion Trend Technology Co., Ltd.

☎ +86-755-32998548

✉ service@huion.com

🌐 www.huion.com

🔗 www.huion.com/support

Warranty Card

Product Information

Product Name _____

Buying Date _____

Model _____

Dealer Information

Name _____

Sale Date _____

Phone _____

Address _____

User Information

Name _____

Email _____

Phone _____

Address _____